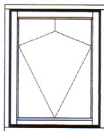
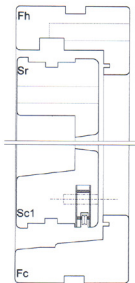


## VERTICAL SECTION



## G 2475 TOP TURN

Top hung fully reversible ironmongery produced in module and half module sizes fitted with an internal restrictor which provides a ventilation and a wash stop in the fully reversed position except for modules M4, M4.5, M5 and M5.5.

Brown or white finish.

Module	Hinge Length L	Module	Hinge Length L
M4	318	M10.5	968
M4.5	368	M11	1018
M5	418	M11.5	1068
M5.5	468	M12	1118
M6	518	M12.5	1168
M6.5	568	M13	1218
M7	618	M13.5	1268
M7.5	668	M14	1318
M8	718	M14.5	1368
M8.5	768	M15	1418
M9	818	M15.5	1468
M9.5	868	M16	1518
M10	918		

The G 2475 set comprises:  
 Pair of module hinges  
 Pair of snap-in sash brackets  
 Pair of sash slides

### TECHNICAL DATA

Maximum width - 1600mm  
 Maximum height - 1588mm  
 Maximum weight - 80kgs.  
 Maximum surface area - 2.5 sq.mtr.

For full technical and manufacturing specification please consult the System 2000 manual available from Grorud Industries Ltd.

Maximum width	1600mm
Maximum height	1588mm
Maximum weight	80 Kg
Maximum surface area	2.5 sq. mtr

## HORIZONTAL SECTION

